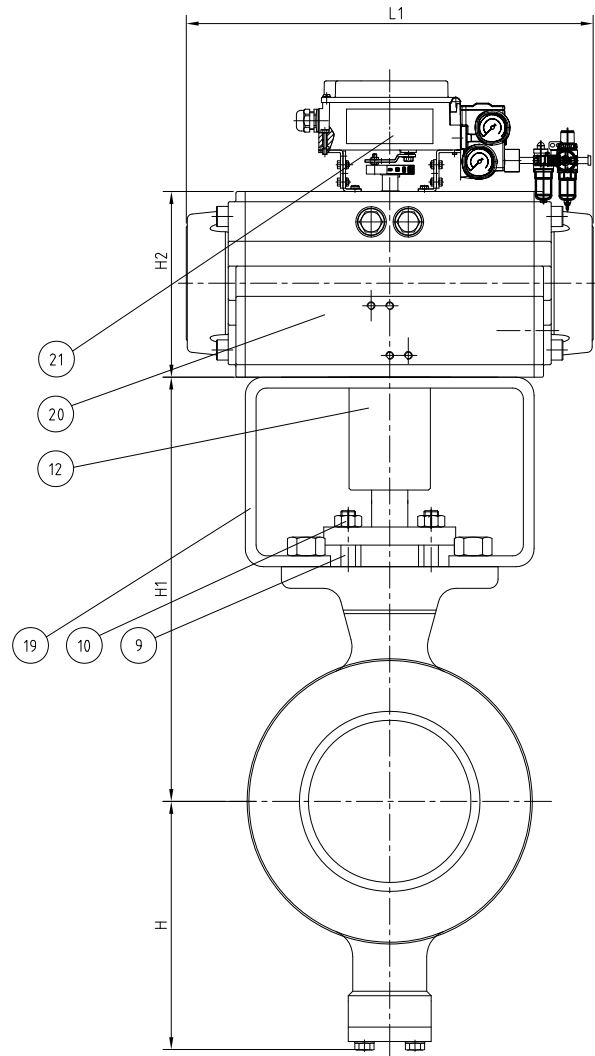
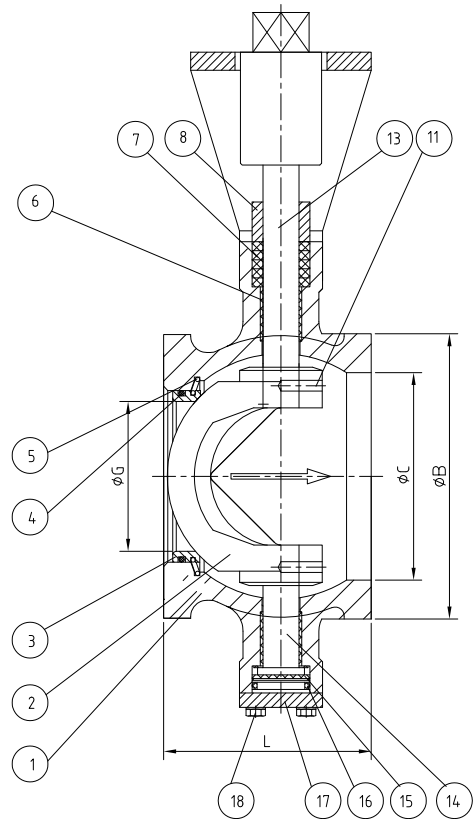


ON DWD D050d
지시용 집지수
지시외일반집지수 제품치 일반집지수용차 절삭가공부분
구분 1급
14이하 8이하 ±0.2
15~ 63~ ±0.3
63~ 250~ ±0.5
250~ 1000~ ±0.8
1000~ 2000~ ±1.0
3000~ 4000~ ±1.5
4000~ 10000~ ±2.5
10000~ 100000~ ±3.5
용접구조물 (관급기공포함)
지수치
구분 보통급
100이하 ±1.5
100이하 300이하 ±2.9
300이하 1000이하 ±3.5
1000~ 3000~ ±5.0
3000~ 5000~ ±7.2
진각도
300이하 ±1.5
300이하 1000이하 ±2.3
1000~ 3000~ ±3.5
3000~ 5000~ ±5.0
3000~ 5000~ ±7.2
1. 1300이하일때 2. 5000이하 1000 보다-0.3씩 단
각각도
300이하 ±2.0
300~ 1000~ ±3.0
1000~ 2000~ ±4.0
2000~ 3000~ ±5.0
1. 1000 이하일때 2. 3000이하 1000 이하에 공차
10000이하 C 0.3 ~ 0.8 100000이하 IC -0.3~0.8

Model No. : D100-SGN/DHCVD



NO.	DATA	REVISIONS & DESCRIPTION	SIGNATURE	
			REVIEWED	CHECKED

Pressure Rating (DIN)	Test Pressure(kg/cm2)			Applicable Temp. (°C)
	Shell	Seat Leakage Hydro.	Air	
PN25	79	58	6	+120°C

- DESIGN STANDARD
1. Flange standard : DIN PN25
  2. Face to face dimension : Requirements
  3. Wall thickness standard : ASME B16.34-2004
  4. Test Standard: ASME B16.104-Class IV
  5. Pressure temperature rating : ASME B16.34-2004

NO.	DESCRIPTION	MATERIAL	QUANTITY	UNIT	REMARK'S
21	Positioner	Commercial	1	EA	
20	Actuator	MaxTork	1	EA	Model : SR AT210
19	Yoke	Carbon Steel	1	EA	
18	Bolt	ASTM A193 B8M	1	Set	
17	Bottom Cover	A351 CF8M	1	EA	
16	O-RING	Viton	1	EA	
15	Adjusting Gasket	PTFE	1	EA	
14	Lower Stem	SUS316	1	EA	
13	Upper Stem	SUS316	1	EA	
12	Conneting shaft	S45C	1	EA	
11	Pin	SUS316	1	EA	
10	Nut	ASTM A194 8M	1	Set	
9	Stud Bolt	ASTM A193 B8M	1	Set	
8	Packing Gland	A351 CF8	1	EA	
7	Packing	PTFE	1	Set	
6	BUSH	SUS316	1	EA	
5	Spring	SUS316	1	Set	
4	O-RING	Viton	1	EA	
3	Seat	SUS316+STL	1	Set	
2	Ball	CF8M+HCr	1	EA	
1	Body	A351 CF8M	1	EA	

NOMINAL DIAMETER		MAIN DIMENSION							
DN	DIN	L	B	C	G	H	H1	L1	H2
200A	PN25	200	268	206	155	200 ± 5	330 ± 5	532	257

**posco**

TITLE	SCALE	PROJECTION
	REF. DWG. NO.	MANUF. NO.
POSICO	DATE	DWG. NO.
SIGNATURE	DRAWN	CHECKED
DATE	REVIEWED	APPROVED
	CONSULTANT	DRAWN
	CHECKED	REVIEWED
	APPROVED	APPROVED
	POSICO DWG. NO.	